



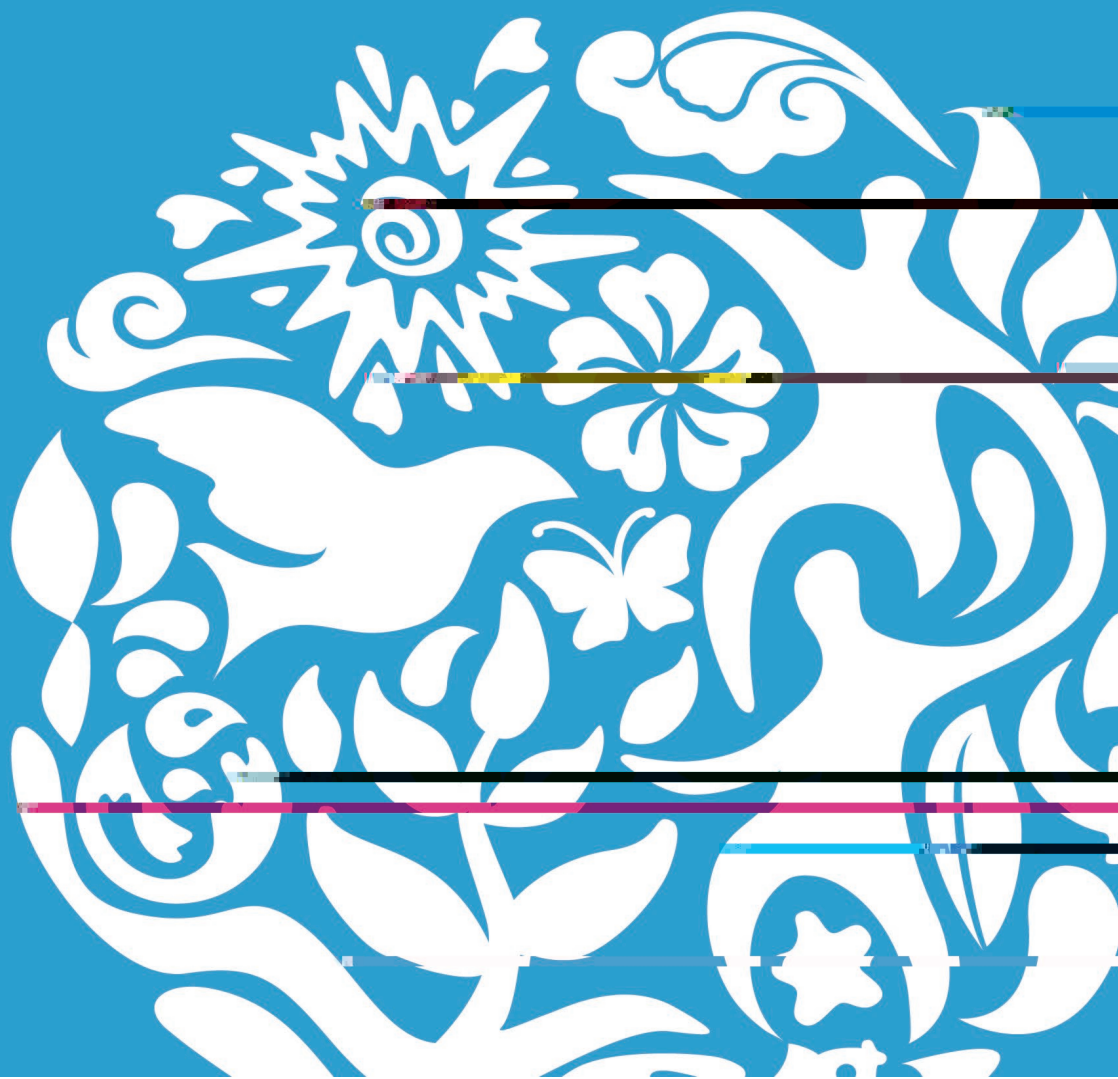
金东纸业  
GOLD EAST PAPER

# 社会责任报告

CORPORATE SOCIAL  
RESPONSIBILITY REPORT

# 2022

我们始终在行动



---

◆ 高层致辞.....	01
◆ 一、企业概况.....	02
1.1 .....	02
1.2 .....	02
1.3 .....	03
◆ 二、科学经营.....	05
2.1 .....	05
2.2 .....	07
2.3 .....	07
2.4 .....	08
◆ 三、环境保护.....	08
3.1 .....	08
3.2 .....	09
3.3 .....	10
3.4 .....	10
3.5 .....	11
◆ 四、社会责任.....	12
4.1 .....	12
4.2 .....	14
4.3 .....	16
4.4 .....	18
4.5 .....	19
4.6 .....	20
4.7 .....	21
◆ 五、信息反馈.....	24

# 前 言

---

## 关于本报告

金东纸业(江苏)股份有限公司(以下简称“金东纸业”或“公司”)从2005年底开始对外公开发布《环境报告书》，2007年我们在《环境报告书》的基础上增加了社会责任部



2022

2008

“ ”

“ ”

2023

“ ”



# 1.1

18

1997 5

39.95 3000

2 2

1 200

— —

CNAS

" 2011

" 2012 12

" 2013

" 2014 "

" 2015 " 2014

" 2016

" " 2017

" " "

" 2018 " "

2019 " "

2020 " "

# 1.2

2035

2012 " "

2014 " "

" 2016 " "

" " "

" " "

2035 " "

2035

2013 RISI

PPI

2035 1.4 2030 1.9 1.7

1.7 2035 2.5%

" "

" " 2007

500

2011 1 8 1

12 " 2010-2011 2025



2020	13.5%		2500		12425
			2.64		12403
			-1.94		87.84
		2025	2013	2022	14.12
					2.32
30	75%		2.67		
2030	90%				
		2022			

### 1.3

#### 1.3.1 2021

2022	/	/	/
2021	/		
	/		
2022			
2022			
2022	100		
2022	100		
2022	/		
2021			
2021	/		
2021		/	



### 1.3.2

1		2017	
2		2015	
3		2014	QC
4		2014	QC
5		2014	
6		2013	
7		2013	
8	Cast Coated Paper	2013	PPI
9		2013	41 &
10		2012	PPI
11		2012	
12		2012	QC
13		2012	
14		2012	
15		2012	
16		2011	
17		2010	6Sigma
18		2010	
19		2010	
20		2009	
21		2008	
22			" " 2008
23			" " 2008
24		2008	
25		2008	6Sigma
26		2007	QC
27		2006	6Sigma
28		2006	6Sigma
29		2005	
30	DULL	2005	6Sigma
31		2005	QC
32		2005	QC
33		2004	
34		2004	QC
35		2003	QC



“

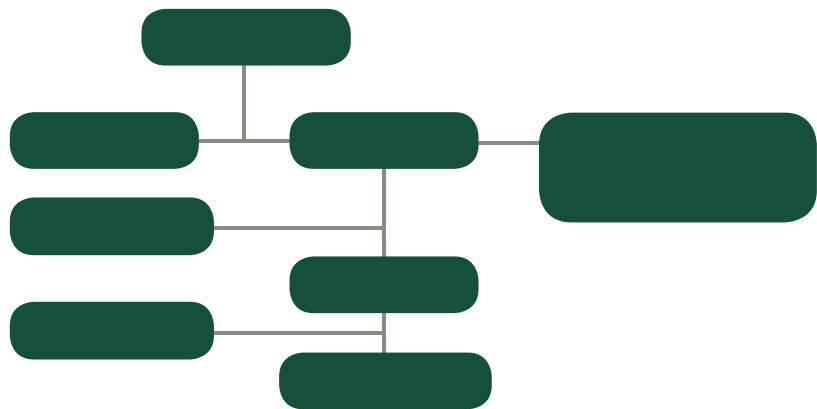
“ ” “

330                      10                      2022                      532                      9  
323                      197                      3



## 2.1

### 2.1.1







2022

2.3.2

2.2

( )

"

"

( )

2022

196.724

196.835

109.072

24.1359

4.2913

2022

2022

196.724

196.835

200

109.072

24.1359

4.2913

2.3.3

"

"

10

30

"

"

2.3

100

48

52

2.3.1

2.3.4

1.

5 31

3 8

2.

2022

1168

3.



## 2.4

ISO14001

"

"

2022 12 30

ISO14064

"

" " 2021

" ISO14064

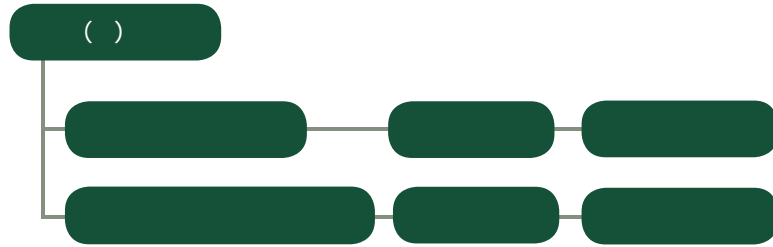
ISO 9001		2000/2/15	2021/6/15
ISO 14001		2001/2/20	2022/8/12
ISO 45001		2004/12/17	2022/8/12
CFCC COC		2007/11/26	2022/8/14
ISO10012		2008/8/22	2022/11/9
QS		2011/10/31	2021/2/5
ISO 50001		2014/12/11	2020/10/23
ISO 14064		2022/12/30	2022/12/30

## 3.1

### 3.1.1



### 3.1.2



## 3.2

2022 #3

2021-2025

1481

"

"

		2022
		1,094,095
		4,515
		48
		1,161
		22,542

### 3.2.2

#### 3.2.1

2022

2014 9

95%

GB/T 23331

2022

7.98 /

"

8.43 /

"

SDA

2008

2021 10

94.75%

2022

2021

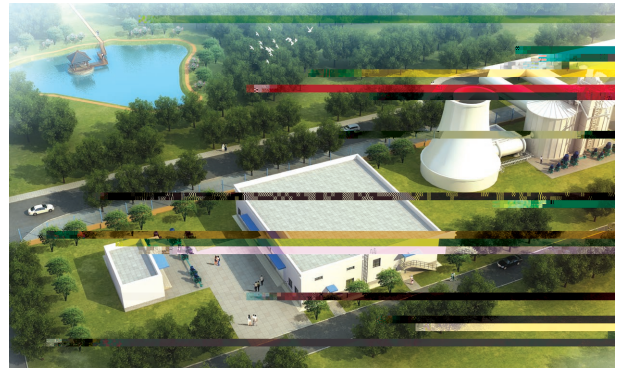
4.5%

2021

2022

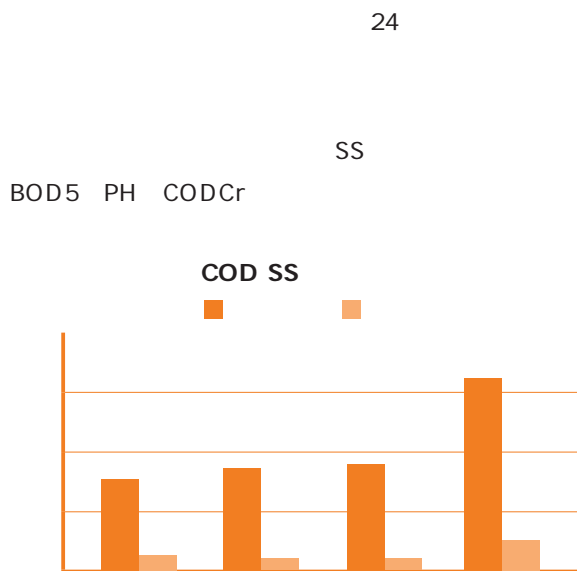


7374 2009  
 " " 2010  
 " " 2013 "  
 " " " ,2017 "  
 " " " 2020 2022  
 2022

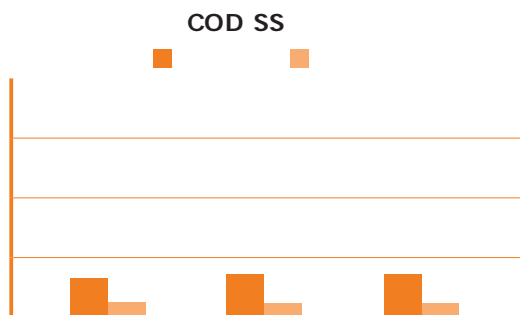


### 3.2.3

### 3.3



100%



### 3.4

2030 2060 2020 9



2022

( )	158166.65	
( )	74374.45	
	17472	
( )	10352.506	
( )	318.824	
( )	273.555	

1.9 CO<sub>2-e</sub>

2017 335.86

48.79 CO<sub>2</sub> —

CO<sub>2</sub> 5.5 4.9

13 17 CO<sub>2</sub> 150

3.5

2021 12  
2019-2020

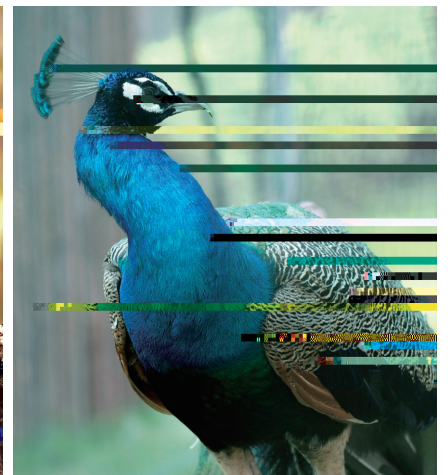
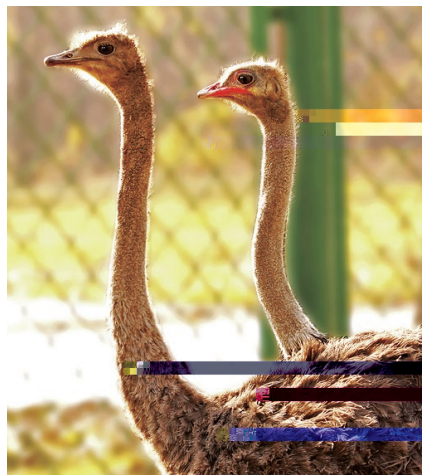
63% 60 61

2016 2017

20 10  
20

2023

3000 kWh, 1





## 4.1

## 4.1.3

"

"

Mentor/Angel

Mentor,  
Angel,

4.1.1

2022 3076 /

3067 9

2022 12 3076 2022

175 5.92%

18

## 4.1.2

HIPO

IDP

5

2280

4200 1.84

2020		21	691	9	7
		4967	58214	3907	628
		279	42365	628	238
		17.8	1.4	6.2	2.6
2021		30	2819	32	5
		18678	71183	1721	1154
		451	57547	454	214
		41.4	1.2	3.8	5.4
2022		31	3029	30	15
		17452	79040	18065	2114
		633	64479	3903	550
		27.6	1.2	46	3.8



48

4.1.4

a.

b.

"

" "

"

c.

d.

" "

100%

4.1.7

"

"

2020

20

4.1.5

542

1

17.65%

4.1.8

a.

41.17

35

18.06%

b.

48.11

35

0%

c.

41.19

35

18.01%

4.1.6

2022

"

"

10

2022 25

2022 APP 30

2022



40

2022 11 5

160

38

2022 9 21

4B

"

80

"

?

"

"

" "

2022 3 8

"

"





### 4.3

2021

:  
 , GBZ 2.1-2019  
 1 : ; :  
 , GBZ 2.1-  
 2019 1 :  
 ;

PDCA

60

2600

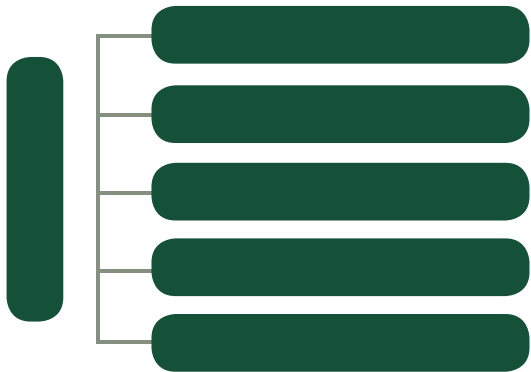
2022

5

/

/

	LPG
	LPG





SAP-PM ,

“ ”

JHA

100%

100%

100%

“ ”



QS

2022

2013

A B C D

4.4

VSR

VSR

1.0

4.4.1

ISO 9001 ISO

14001

4.4.2

MSDS

100%  
TCF

90%

ECF

2007 11 PEFC Programme for the  
Endorsement of Forest Certification schemes

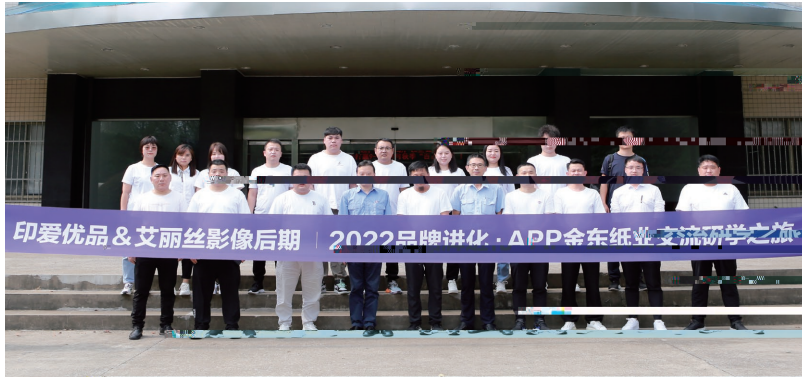
2010

CO2

2008

2011

2022



1.

/

4.5.1

2.

3C

"

"

3.

2004

4.

4.5

OPTICOMINTERNATIONAL RESEARCH AB

"

"

"

"

345

21

"

"

4.5.2



ISEGA

4.5.3

4.6.2

NEVIA NEWS

2022

" NIREUS NEVIA SPACE SHUTTLE  
SUNBRITE ART-TECH XPLORE" " NEVIA  
"

1999

ISO 9001

4.6

ISO 14001

OHSAS18001

ISO 17025

ISO 10012

ISO 50001

" — " — —

ABB QCS ULMA  
WIS BTG

SPC

SPDA

4.6.1

MES2.0( )

SAP

ISO9001-2008

GB/

SPC

SPC

T28001-2011

SPDA

ISO 9001 ISO 14001

2013 " " CTI







4.7.3

2022 3 2

" "

110

500

4000

" "

2022 1 29

" "

2022 4 6

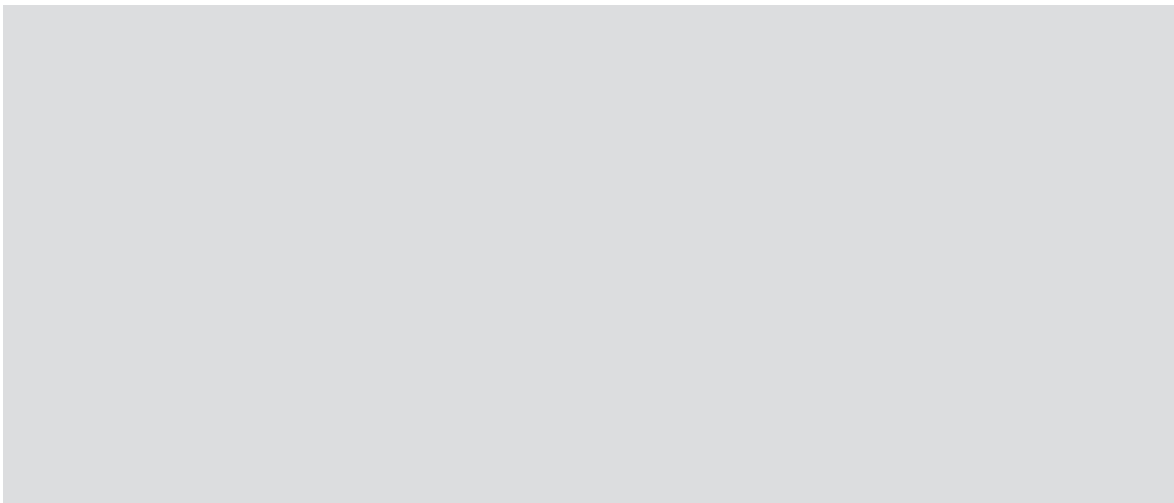
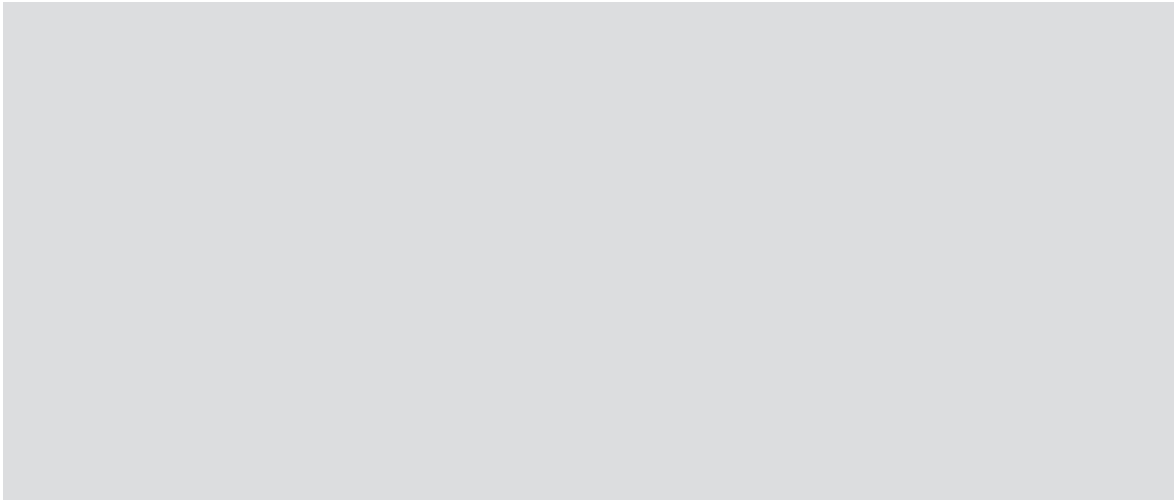
15

75%

2003

8

300



E - mail

